



Space Technology Center – how we cooperate with industry

PROFESSOR
TADEUSZ UHL



Background

What we can offer for industrial partner?

1. Knowledge (basic science)
2. Ideas
3. Talents
4. Research Infrastructures

My personal background is based on academic research experiences but also real industrial experiences



Cooperation schemes

- 1. Joint projects as a partner – give industrial partners scientific knowledge to solve project tasks**
- 2. Creation of project idea and invite partners from industry as supplier or partner (depends on project IP plans)**
- 3. Delegate university staff for temporary job in industry on well defined project**
- 4. Offer access to research infrastructure installed at the University**
- 5. Cooperation in education (CloudFerro, Intel, ICEYE, SpaceForest.....)**
- 6. Entrepreneur's environment (University, local government, ESA BIC) for developing and idea of the company**



Mxene on LEO

Idea of the project from AGH University of Krakow

Application to ESA

Negotiation with industry to take part in the project

Negotiation of contract with ESA

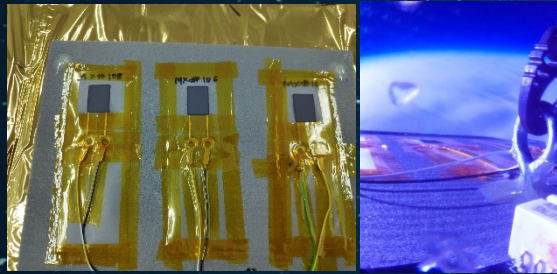
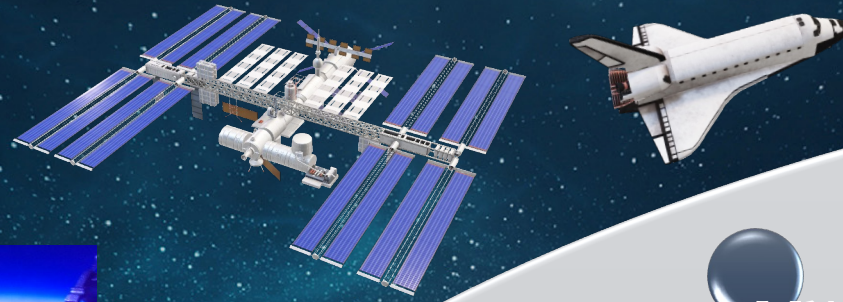
Project development and management



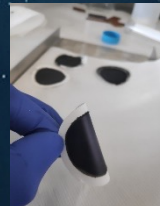
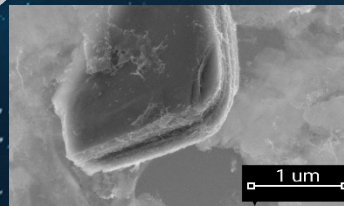


Space
Technology
Centre
AGH

MXene Research Trajectory @ CTK AGH



● MXene Fundamentals > Sensors > Nanobiomaterials



● MXene Experiments
in Stratosphere

● MXene ISS
Experiment

● MXene
production
in Space

● MXenes
Devices for
Deep Space
Applications



THANK YOU FOR YOUR
ATTENTION

Professor Tadeusz Uhl

tuhl@agh.edu.pl

spacotech.agh.edu.pl



**SPACE
TECHNOLOGY
CENTRE AGH UST**